



DO YOU KNOW [YOURSELF]?

Sujin Kim

HOW MANY DIFFERENT LETTERS ARE
THERE?

A B C D E F G H I
J K L M N O P Q R
S T U V W X Y Z

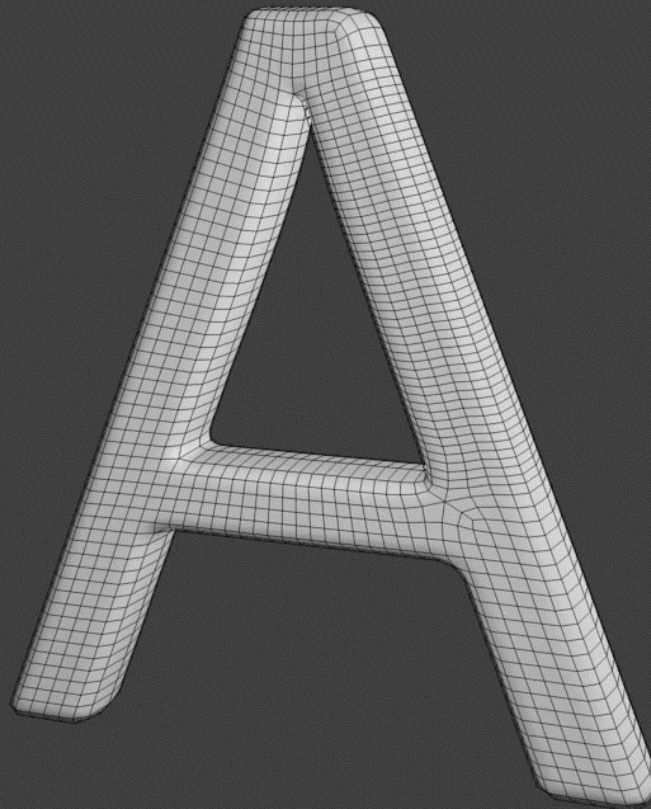
HOMEOMORPHIC LETTERS

(C G I J L M N S U V W Z)

(E F T Y) (K X) (H)

(D O) (P Q) (A R) (B)

TRANSFORMATION



LET'S TAKE A TEST

<https://www.16personalities.com/>

While taking the test keep in mind:

- Do not overthink
- Be truthful

MYERS-BRIGGS: 16 PERSONALITIES

1. How do you gain energy?

- Introvert: inward
- Extrovert: outward

2. What do you focus attention on?

- Observant: concrete
- Intuitive: abstract

3. How do you make decisions?

- Thinking: rule-based
- Feeling: situation-based

4. How related to the external world?

- Judging: structured
- Perceiving: unstructured



DO YOU KNOW
YOUR VITALS?

- **V**alues
- **I**nterests
- **T**emperament
- **A**round-the-Clock Activities
- **L**ife Goals
- **S**trengths & Skills

VALUES



OPEN-
MINDEDNESS



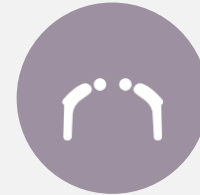
LOYALTY



OPTIMISM



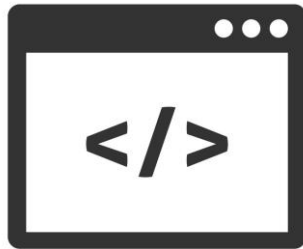
DEPENDABILITY



RESPECT



PUNCTUALITY



INTERESTS

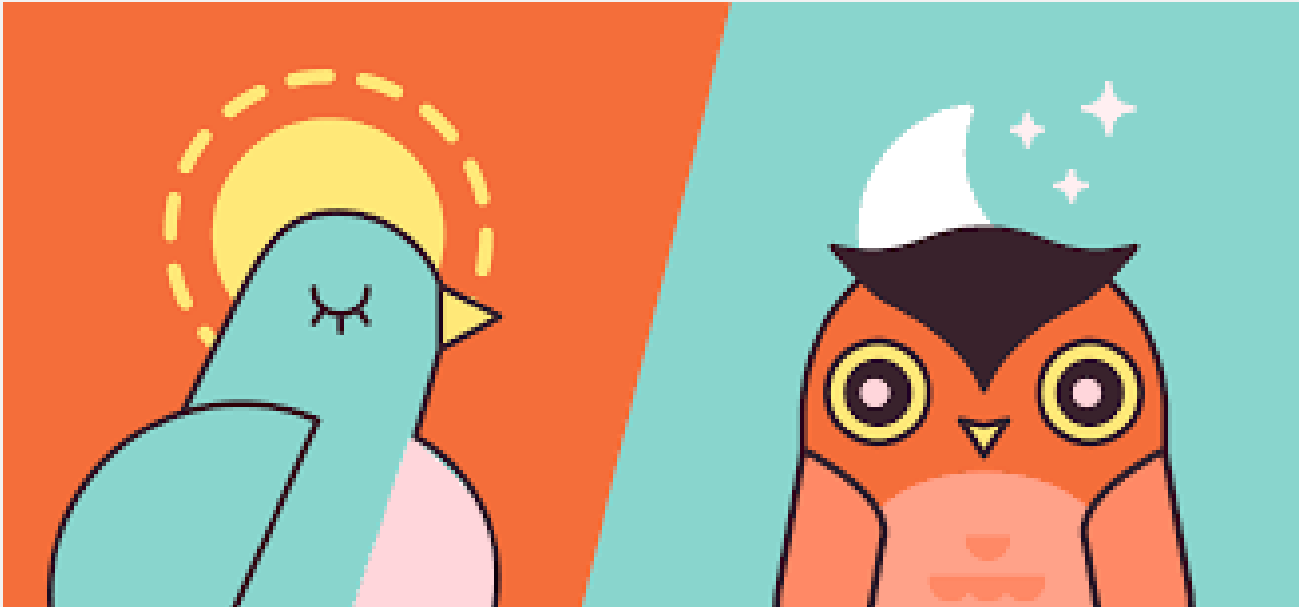
- Watching The Office
- Table Tennis
- Trekking
- Coding

TEMPERAMENT

- Communication: topics of conversation
 - Concrete (S): reality, facts, news, family
 - Abstract (N): why's, if's, beliefs, theories
- Action: how one goes about one's business
 - Cooperative (T): follow social rules, codes of conduct
 - Utilitarian (F): pragmatic approach, result-oriented



AROUND-THE-CLOCK ACTIVITIES



- When do you like to do things?
- Know your limits
- Have “me-time”

A person in a dark suit stands on top of a large, hand-drawn red cube. They are holding a giant, multi-colored pencil (red, orange, yellow, green, blue) vertically. The background is a solid blue color. The text 'LIFE GOALS' is written in white capital letters inside a white rectangular box that overlaps the top of the cube and the person's torso.

LIFE GOALS

- Know your goals
- What is meaningful to you?
- What motivates you?

STRENGTHS & SKILLS



- Hard skills
 - Computer languages
 - Mathematics
 - Data analysis
 - Foreign languages
- Soft skills
 - Common sense
 - Time management
 - Adaptability
 - Negotiation



WHY?



Building relationships



Teamwork



Communication



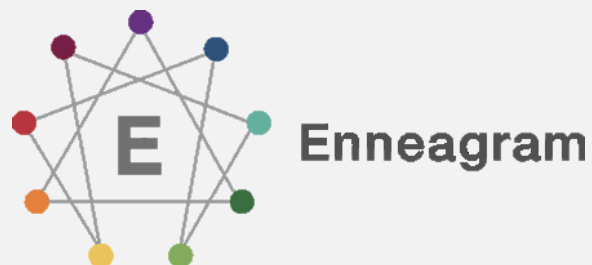
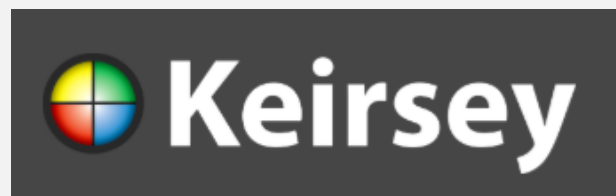
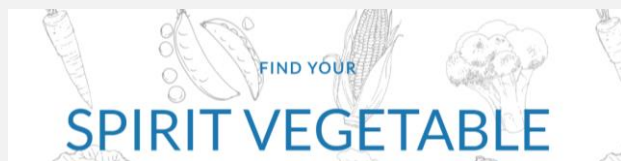
Decision-making



Conflict resolution



**STRENGTHS
FINDER 2.0**



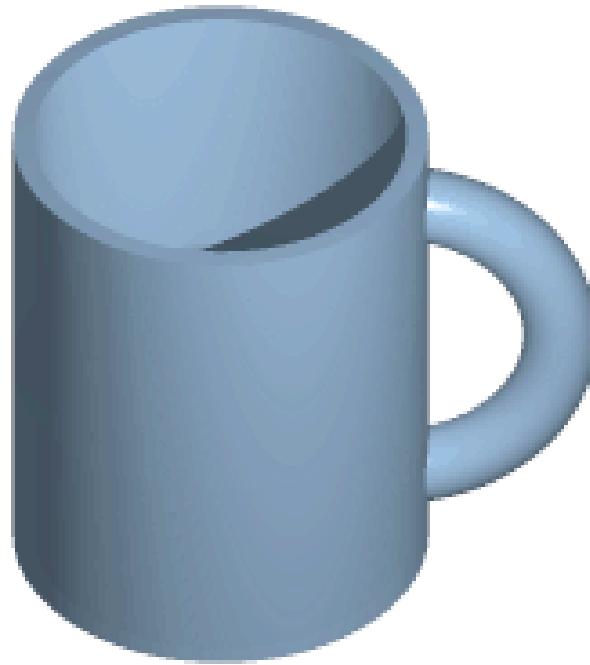
HOW?

- Tests
- Stressful situations
- Self-reflection and introspection
- Late night / road trip conversations

SO BACK TO MATH...

- **Not** topography, **not** typography, **not** typology...
Topology
- The study of geometric properties and spatial relations that are preserved under continuous deformations
- Homeomorphic spaces

CLASSIC DONUT-MUG



THANK YOU!